

# CONDENSATE RECOVERY SYSTEM



*Conserving Energy...*

**CORES**

Reducing Cost

## Features

- very reliable due to no moving parts.
- Designed for high pressure.
- High discharge capacity.
- High temperature Operation.
- Skid mounted.
- Zero maintenance.

# SMS

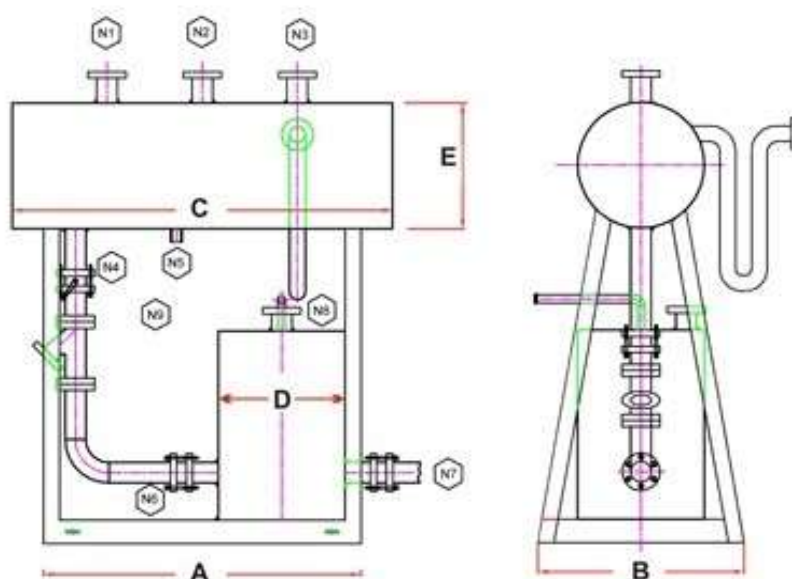
## Heat Well Controlled

## Models

Model	Condensate Inlet to Receiver (N1, N2)	Condensate Pump Inlet (N6)	Condensate Outlet from Pump (N7)	Motive Steam Inlet (N9)	Receiver Vent (N2)	Over Flow (N10)	Trap Line	Pump Vent
CORES 3000	50NB X 2	65NB	50NB	15NB	25NB	50NB	15NB	15NB
CORES 5000	65NB X 2	80NB	80NB	15NB	50NB	50NB	15NB	26NB

## Pumping Capacity of CORES

Operating Inlet Motive Pressure	Total LHM/ Back Pressure	CORES3000	CORES5000
Kg./Cm <sup>2</sup> (G)	Kg./Cm <sup>2</sup> (G)	LPH	LPH
2	0.5	1309	5940
	1.0	1265	4972
3	0.5	1386	6578
	1.0	1320	5610
	1.5	1287	5324
4	2.0	1155	4785
	0.5	1430	7029
	1.0	1364	6061
	1.5	1320	5720
5	2.0	1199	5027
	3.0	1034	3091
	1.0	1397	6413
	1.5	1353	6028
6	2.0	1243	5217
	3.0	1078	3586
	1.0	1430	6699
	1.5	1375	6270
7	2.0	1265	5368
	3.0	1122	3982
	4.0	1089	3883
	1.0	1452	6941
8	1.5	1397	6490
	2.0	1298	5500
	3.0	1155	4323
	4.0	1122	3993
9	1.0	1474	7040
	1.5	1408	6677
	2.0	1320	5610
	3.0	1177	4620
10	4.0	1144	4081
	1.0	1485	7161
	1.5	1419	6831
	2.0	1342	5709
10	3.0	1210	4884
	4.0	1166	4158
	1.0	1507	7282
	1.5	1441	6974
10	2.0	1353	5797
	3.0	1232	5111
	4.0	1188	4235



CORES	A	B	C	D	E
3000	900	650	1000	350	350
5000	1000	650	1200	400	400

Note : All dimensions are in mm.

We are also in the business of :-

Boiler Automation & Energy Enhancement

Heat Recovery Equipments

Pollution Control Equipments

Steam Engineering

Industrial Fans



**E**NERGY  
**E**FFICIENT  
**E**QUIPMENTS

**S M S**  
Heat Well Controlled

# SOLIDEX-COMBI

External Furnace | Water Tube Cum Smoke Tube Boiler



## MODEL

### “SOLIDEX-COMBI”

External Furnace

Water Tube Cum Smoke Tube Boiler

## RANGE

**CAPACITY:** 1.0 TPH to 16.0 TPH.

**PRESSURE:** UPTO 21 kg/cm<sup>2</sup>.

**TEMPERATURE OF STEAM:**

Saturated & Superheated up to 320 Deg C.

### APPLICATIONS:

Textile, Rice Mill, Chemical, Refinery,  
Food, Pharmaceutical, Paper, Solvent.

## SALIENT FEATURES

- High Efficiency.
- Advantages of water tube as well as smoke tube design.
- Complete combustion of fuel due to better Combustion Technologies.
- Low STEAM PRODUCTION COST.
- High turn down ratio.
- Multi Fuel options.

## FUEL



RICE HUSK



BRIQUETTES



COAL



GROUNDNUT SHELL



PETCOKE



PALM WASTE

## COMBUSTION TECHNOLOGIES



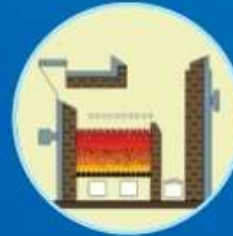
### FIXED GRATE Manual Firing System

Best Suited for fuels like Coal, wood, Lignite, briquette etc.



### FIXED + PNEUMATIC / SCREW FEEDING Automatic + Manual

Best Suited for fuels like Rice Husk, Saw dust, Fines etc.



### FLUIDISED BED Automatic Firing System

Best Suited for fuels like Indonesian Coal, Pet Coke, Paddy Husk, Pellets.



### TRAVELLING GRATE Automatic Firing System

Best suited for Multi Fuels



**ShreeLaxmi**  
ENGINEERING PVT. LTD.

**Factory & HO:** Plot No. 39 & 40, STICE, Musalgaon, Tal. Sinnar, Nashik 422103 Maharashtra, India. Tel.: +91-2551-240042.

**Nashik Office:** 7, Nivrutti Complex, Mumbai Agra highway, Dwarka, Nashik 422001 Maharashtra, India. Tel.: +91-253-6539105.

**Mumbai Office:** F-302, Dreams The Mall, LBS Marg, Bhandup (W), Mumbai 400078 Maharashtra, India. Tel.: +91-22-21663324/25.

Web: <http://www.heatersandboilers.com>, <http://www.shreelaxmiepl.com>



## **SOLID FUEL FIRED BOILERS**

Model: SOLIDEX-IN / SIB

Capacity: 400 To 6000 Kg/hr

Pressure: Upto 21kg/cm<sup>2</sup>

Type of Fuel: Wood, Coal, Briquettes,  
Rice Husk, Groundnut Shell

Combustion System: Manual / Automatic Combustion



Model: SOLIDEX-COMBI

Capacity: 1 to 16 TPH

Pressure: Upto 21 kg/cm<sup>2</sup>

Type of fuel: Wood, Coal, Briquettes,  
Rice Husk, Groundnut Shell

Combustion System: Manual / Automatic Combustion



## **LIQUID/GAS FUEL FIRED BOILERS**

Model: OIL-Ex / OIL-ExG

Capacity: 1 to 16 TPH

Pressure: Upto 21 kg/cm<sup>2</sup>

Type of fuel: Light Diesel Oil (LDO) / Diesel /  
Furnace Oil (FO) / Natural Gas / LPG

Combustion System: German / Italian /  
Indian Burner - Fully Automatic



## **HOT WATER GENERATOR**

Model: HWG

Capacity: 1 to 20 L kcal/hr Type: Coil / Shell

Type of Liquid fuel: Light Diesel Oil (LDO) /  
Diesel / Furnace Oil (FO) / Natural Gas / LPG

Type of solid fuel: Wood, Coal, Briquettes,  
Rice Husk, Groundnut Shell



## THERMIC FLUID HEATERS

Capacity: 1 to 20 L kcal/hr

Type: Vertical / Horizontal

Type of fuel: Light Diesel Oil (LDO) /  
Diesel / Furnace Oil (FO) /  
Natural Gas/ LPG



Capacity: 1 to 20 L kcal/hr

Type: Vertical / FBC

Type of fuel: Wood, Coal, Briquettes, Rice  
Husk, Groundnut Shell

## SPECIALIZED FABRICATION

Fabrication of Chimney,  
Coils of Thermic Fluid Heaters,  
Limpted Coil Reactors, Jacketed Vessels,  
Pumping Unit, SS and MS Tanks



**Factory & HO:** Plot No. 39 & 40, STICE, Musalgaon, Tal. Sinnar,  
Nashik 422103, Maharashtra, Tel.: +91 2551 240042.

**Nashik Office:** 7, Nivrutti Complex, Mumbai Agra highway,  
Dwarka, Nashik 422001, Maharashtra, Tel.: +91 253 6539105.

**Mumbai Office:** F 302, Dreams The Mall, LBS Marg, Bhandup (W),  
Mumbai 400078, Maharashtra, India. Tel.: +91-22-21663324/25.

Email: [info@shreelaxmiepl.com](mailto:info@shreelaxmiepl.com), [mahesh@shreelaxmiepl.com](mailto:mahesh@shreelaxmiepl.com)  
Web: [www.heatersandboilers.com](http://www.heatersandboilers.com), [www.shreelaxmiepl.com](http://www.shreelaxmiepl.com)

**: OUR ASSOCIATE :**